

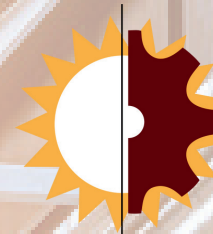
Note: Please contact factory for updated contact and ordering information as this can change periodically.

VENDOR PRIMARY CONTACTS ORDER INFO MIN/FA CUT-OFF TIMES

	C.S. : 330-745-8891 ext 314 - scottbrann@akronelectric.com T.S. : 330-745-8891 ext 322 - ppatel@akronelectric.com	scottbrann@akronelectric.com Fax: None	MIN: \$100 F.A.: \$4,000	11:00am CST
	C.S. : 888-470-2444 - inside@tec-sales.com T.S. : 888-470-2444 - inside@tec-sales.com	orders@tec-sales.com Fax: 866-404-4535	MIN: \$200 F.A.: All	None
	C.S. : 616-794-0700 - csr@robroyenclosures.com T.S. : 616-794-0700 - bhartwell@robroy.com	csr@robroyenclosures.com Fax: 616-794-3378	MIN: \$300 F.A.: \$3,000	1:00pm CST
	C.S. : 315-635-2500 - ljones@bacocontrols.com T.S. : 315-635-2500 - jmadison@bacocontrols.com	orders@bacocontrols.com Fax: None	MIN: None F.A.: \$500	1:00pm CST
	C.S. : 281-853-4891 - Jaime.garza@bartec.com T.S. : 281-853-4891 - Jaime.garza@bartec.com	sales@bartec.com Fax: 616-794-3378	MIN: \$500 F.A.: None	1:00pm CST
	C.S. : 610-383-9200 - customer.service@bender-us.com T.S. : 610-383-9200 - industrial.sales@bender-us.com	orders@benderinc.com Fax: None	MIN: \$100 F.A.: None	12:00pm CST
	C.S. : 615-244-2825 - dbeever@bonitron.com T.S. : 615-574-4228 - msadd@bonitron.com	info@bonitron.com Fax: None	MIN: None F.A.: None	2:30pm CST
	C.S. : 832-301-8561 - bjefferson@citel.us T.S. : 954-551-6751 - lpecourt@citel.us	orders@citel.us Fax: 954-430-7785	MIN: None F.A.: None	11:00 am CST
	C.S. : 513-924-9400 - sales@crohm.com T.S. : 859-750-4740 - rusty.ohara@crohm.com	sales@crohm.com Fax: None	MIN: \$100 F.A.: None	Call
	C.S. : 832-670-0964 - curtis.malott@dinkle.com T.S. : 346-664-9214 - Sergio.Gonzalez@dinkle.com	curtis.malott@dinkle.com Fax: None	MIN: \$100 F.A.: None	11:00am CST
	C.S. : 973-265-0750 - giulia.alberini@ek-group.com T.S. : 973-265-0750 - giulia.alberini@ek-group.com	giulia.alberini@ek-group.com Fax: 973-265-0854	MIN: \$50 F.A.: \$2,500	2:00pm CST
	C.S. : 224-246-5591 - denise.humes@e-t-a.com T.S. : 713-882-0846 - taylor.davies@e-t-a.com	denise.humes@e-t-a.com Fax: 847-27-7655	MIN: \$0 F.A.: \$1,000	10:00am CST
	C.S. : 585-366-0333 - jack@exiscan.com T.S. : 585-366-0333 - orders@exiscan.com	orders@exiscan.com Fax: None	MIN: None F.A.: None	2:00pm CST
	C.S. : 281-377-4401 - ramiro.ramos@e2s.com T.S. : 713-835-7780 - scott.harman@e2s.com	ramiro.ramos@e2s.com Fax: None	MIN: \$100 F.A.: None	2:pm CST
	C.S. : 770-271-4431 - m.merritt@finder-us.com T.S. : 770-271-4431 - m.tomlinson@finder-us.com	newpo@finder-us.com Fax: 770-271-7530	MIN: \$100 F.A.: None	2:00pm CST
	C.S. : 800-2809517 x 2 - sales@gracetechnologies.com T.S. : 800-2809517 x 2 - sales@gracetechnologies.com	orders@gracetechnologies.com Fax: None	MIN: None F.A.: \$0	11:00am CST
	C.S. : 864-813-9431 - suit.c@gindre.com T.S. : 864-813-9431 - suit.c@gindre.com	customer.service.gwd@gindre.com Fax: None	MIN: Call F.A.: Call	2:00pm CST
	C.S. : 800-526-2266 - kallen@hammfg.com T.S. : 888-470-2444 - inside@tec-sales.com	orders@tec-sales.com Fax: None	MIN: None F.A.: \$975	12:00pm CST
	C.S. : 214-360-7708 - customerservice@hayata.com T.S. : 214-360-7708 - technicalsupport@hayata.com	customerservice@hayata.com Fax: 214-360-7718	MIN: \$100 F.A.: \$1,500	2:00pm CST
	C.S. : 800-892-3755 - custserv@jeffersonelectric.com T.S. : 800-892-3755 - custserv@jeffersonelectric.com	custserv@jeffersonelectric.com Fax: None	MIN: \$100 F.A.: \$2,000	2:00pm CST
	C.S. : 224-352-2249 customer_care.us@lselectricamerica.com T.S. : 800-891-2941 - tech_support.us@lselectricamerica.com	order.us@LSelectricAmerica.com Fax: None	MIN: \$150 F.A.: \$2,000	2:00pm CST
	C.S. : (310)689-2328 x 101 - lstern@marathon-power.com T.S. : (310)689-2328 x 102 - lstern@marathon-power.com	lstern@marathon-power.com Fax: None	MIN: None F.A.: Call	11:00am CST
	C.S. : 888-470-2444 - inside@tec-sales.com T.S. : 888-470-2444 - inside@tec-sales.com	orders@tec-sales.com Fax: None	MIN: Call F.A.: Call	Call
	C.S. : 414-433-2700 - customerservice@meltric.com T.S. : 414-433-2700 - customerservice@meltric.com	customerservice@meltric.com Fax: 414-433-2701	MIN: \$75 F.A.: \$5,000	2:00pm CST
	C.S. : 817-936-5109 - kfrantum@satecinc.com T.S. : 908-686-9510 - support@satecinc.com	orders@satecinc.com Fax: 907-686-9520	MIN: None F.A.: None	None
	C.S. : 973-575-7422 - info@sibafuse.com T.S. : 973-575-7422 - engineering@sibafuse.com	info@sibafuse.com Fax: 973-575-5858	MIN: None F.A.: None	None
	C.S. : 414-357-4540 - sales@transcoil.com T.S. : 414-357-4541 - tech-support@transcoil.com	sales@transcoil.com Fax: 414-357-4484	MIN: None F.A.: None	10:00am CST
	C.S. : 972-580-0200 - doug.meyer@thermal-edge.com T.S. : 972-580-0200 - doug.meyer@thermal-edge.com	orders@thermal-edge.com Fax: 972-580-0277	MIN: None F.A.: None	12:00pm CST

sales@tec-sales.com www.tec-sales.com P: 888-470-2444 FAX: 8666-404-4535

TS-CPB 26.02



TEC Sales
Connecting Manufacturers to Customers with Faith & Integrity

Your Trusted Advisors on
Control Panels

Call TEC Sales for More Information!

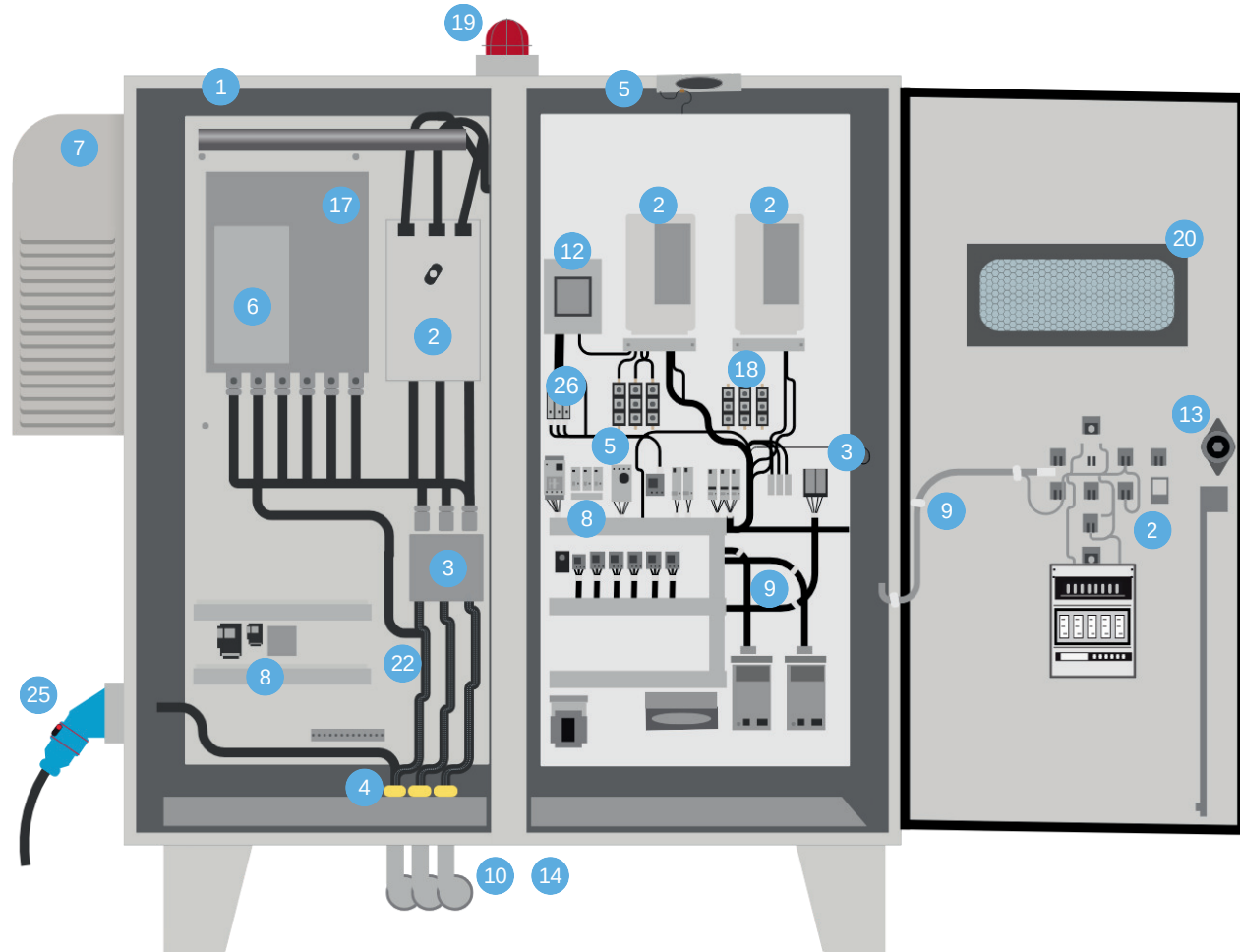
888.470.2444

www.tec-sales.com

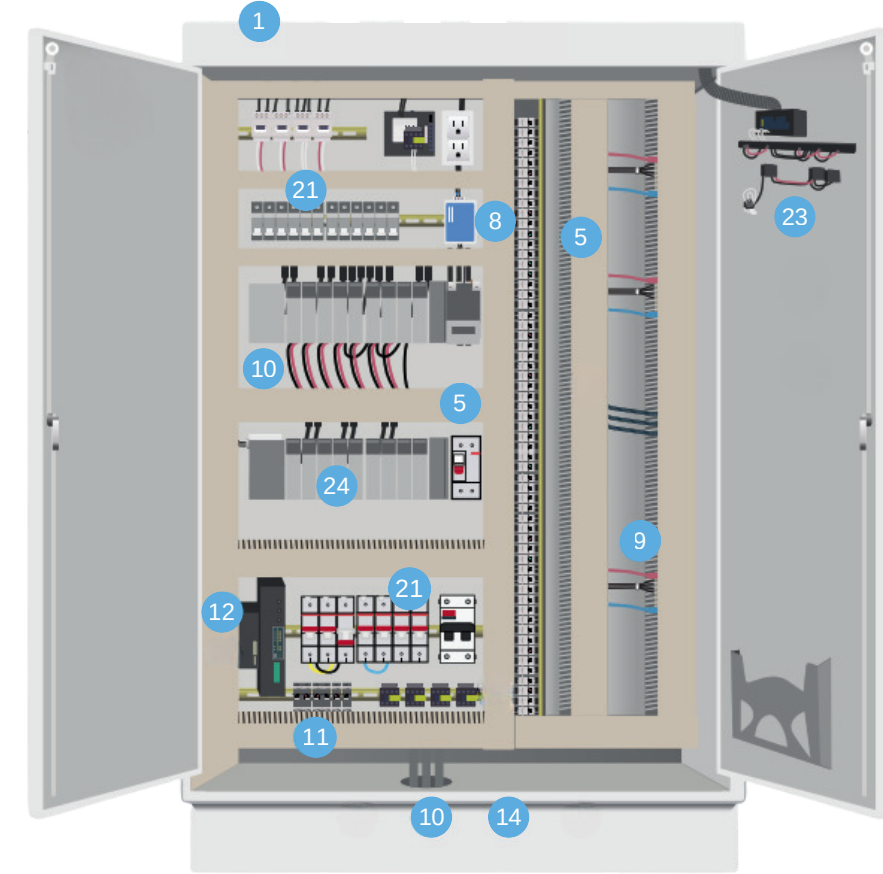
sales@tec-sales.com

FAX: 866.404.4535

Industrial Control Panel



Automation Control Panel



14 **Marmon Industrial Energy & Infrastructure**

- 2000 degrees UL & IEC Listed Critical Circuit Fire Resistive Control/ Power Cable

15 **SATEC**

- Energy & Power Meters
- Power Quality Analyzer
- Revenue Meters

16 **BACO CONTROLS**

- Push Buttons
- Pilot Lights
- Disconnect Switches
- Cam Switches

17 **CRQHM RESISTORS**

- Breaking Resistors
- High Resistance Grounding Systems
- Neutral Grounding Resistors

18 **SIBA**

- Low Voltage Fuses
- High Voltage Fuses
- Miniature Fuses

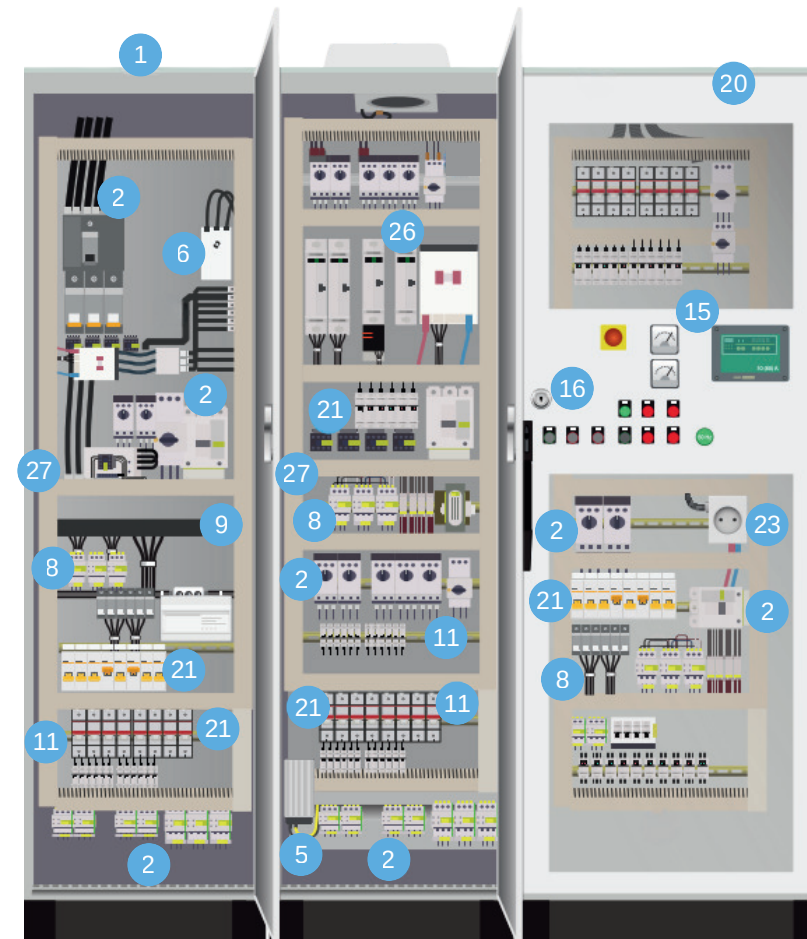
19 **e2S**

- Hazardous Area
 - Beacons
 - Sounders
 - Pull Stations

20 **EXISCAN**

- IR Windows
- Viewing Windows
- Ultrasound Ports

Motor Control Electrical Panel



21 **E-T-A**

- Circuit Breakers
- Power Supplies

22 **GINDRE COPPER**

- Flexible Busbar
- Flat Copper Bars

23 **GRACE TECHNOLOGIES**

- Grace Ports—All types of through panel connectors with covers
- Grace PESD voltage indicators
- Grace Sense continuous monitoring/alerting

24 **BARTEC**

- Power Supply
- Remote I/O systems
- MODEX Bus System
- Cable entries/Line bushings
- 5.7" to 24" Haz Loc HMIs

25 **MELTRIC**
A COMPANY OF MARECHAL ELECTRIC

- Switch Rated Power Plug or Multi-Pin Connectors for Non-Hazardous & Hazardous Locations
 - Panel Mounted Configuration
 - NFPA70E - Arc Flash Compliant

28 **Jefferson Electric**

- Dry-Type Up to 10MVA
- Control Power Transformers

1 **Enclosures**

AKRON **AttaBox**
BARTEC **HAMMOND**

- Akron - Nema 7 & 9 Cast Aluminum
- AttaBox - Non Metallic - Polycarb / Fiberglass
- BARTEC - Hazardous rated GRP, Aluminum, Cast Aluminum, Carbon Steel, Stainless Steel
- Hammond - Stainless, Aluminum, and Carbon Steel

2 **LS ELECTRIC**
Non-Hazardous & Hazardous

- Single & 3 phase VFDs 0.2 HP to 800 HP
- Circuit Breakers
- Motor Starters
- Contactors
- Disconnects
- Power & Tower Alarms

3 **Allient Power**
TCI | An Allient Company

- Power & Harmonic Filters
- Line Reactors
- CPTs

4 **BENDER**

- Ground Fault Monitoring, Ungrounded & Grounded Systems
- Ground Fault location, Ungrounded Resistance Grounding Systems (HRG/LRG)
- Ground Fault Measuring and Monitoring relays

5 **finder**

- Relays (all types)
- Timers
- Thermostats
- Heaters
- Fans

6 **BONITRON**

- Braking resistors

7 **Thermal Edge Inc.**
Non-Hazardous & Hazardous

- Air Conditioners
- Fans & Filters
- Heat Exchangers

8 **CITEL**

- Surge Protection Devices

9 **HAYATA**

- Stainless Steel cable ties, 18 Banding, Installation tools
- ID product tags and automatic tag embossing machines

10 **ELETTROTEK KABEL**

- Data Cables
- Servo Cables
- Profibus DP Cables
- Robotic Cables
- Can BUS & Safety BUS
- Power & Control Cables
- VFD Cables
- Data & Instrumentation Cable
- Industrial Ethernet

11 **DINKLE**

- Terminal Blocks
- Power Supplies
- Connectors, Interconnects

12 **MARATHON POWER**
PREMIUM UNIVERSAL POWER SOLUTIONS

- Din Rail UPS 300w/500w
- 3-phase UPS 10kVA, 15kVA, 20kVA, 2000VA/2000W 48VDC.

13 **AREL**
YOUR SAFETY PARTNER

- Heavy Duty Interlocks
- Key Exchange Boxes
- Access Control